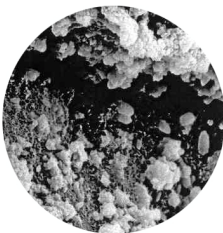
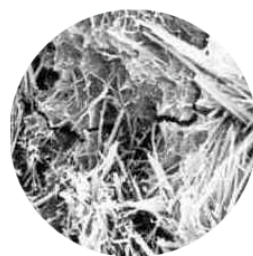


## **Crystalline Waterproofing**

**Cem-Kote CW Plus and Adi-Con CW Plus**



**Left** – unfilled space in cement paste capillarity



**Right** – filled space in cement paste capillarity

### **CEM-KOTE™ CW PLUS - topically applied coating**

CEM-KOTE CW PLUS is a second generation crystalline waterproofing material. Its dual waterproofing action combines conventional crystalline waterproofing with a membrane waterproofing mechanism, producing extremely fast activation – a few days rather than weeks that are the norm for an old style crystalline waterproofing. CEM-KOTE CW PLUS also provides a very tough, hard and well-bonded surface with high abrasion and impact resistance. It can be used for negative and positive waterproofing as a brush-or spray-applied slurry. CEM-KOTE CW PLUS is approved for potable water applications under the ANSI/NSF Standard 61 - Drinking Water System Components and it is also approved for contact with potable water in EU countries.

### **ADI-CON™ CW PLUS – concrete admixture**

ADI-CON CW PLUS is an integral waterproofing admixture for Portland cement based concrete and mortars. The product is a dry, free flowing powder containing a blend of inorganic and organic chemicals, and a small amount of sand and silica based materials. The reactive materials react with lime generated by the hydration reaction of cement and “plug” the capillary porosity, making concrete watertight under water head pressure.

### **Comparison of Gemite’s advanced crystalline waterproofing vs. conventional products**

<b>Characteristic</b>	<b>Gemite technology</b>	<b>Conventional – existing technology</b>
<b>Speed of waterproofing</b>	24-48 hours	Several weeks
<b>Impact resistance</b>	Very high	Low
<b>Abrasion resistance</b>	Very high	Low
<b>Detailing, corners, cracks</b>	Fast, simple, inexpensive and fail-proof	Labor intensive, slow and possibility of leaks
<b>Sprayable</b>	Excellent – low rebound, time consistent rheology	Moderate rheology, rebound, flow, fast set



1



2



3





4



5



6



7



8



9



10



11

#### Figures

1. **Cem-Kote CW Plus**, negative side waterproofing, Bratislava, Slovakia
2. **Cem-Kote CW Plus**, pool protection, London, Ontario, Canada
3. **Adi-Con CW Plus**, slab waterproofing, Bratislava, Slovakia
4. **Cem-Kote CW Plus**, dry well, Toronto, Ontario, Canada
5. **Cem-Kote CW Plus**, dry well, Toronto, Ontario, Canada
6. **Cem-Kote CW Plus**, military facility, Montana, USA
7. **Cem-Kote CW Plus**, foundation walls, Bratislava, Slovakia
8. **Cem-Kote CW Plus**, potable water tank, Illinois, USA
9. **Cem-Kote CW Plus**, tanks, Michigan, USA
10. **Adi-Con CW Plus**, parking structure, Bratislava, Slovakia
11. **Adi-Con CW Plus**, slab waterproofing, Oklahoma, USA
12. **Adi-Con CW Plus**, slab construction, Bratislava, Slovakia
13. **Cem-Kote CW Plus**, negative side waterproofing, Vladivostok, Russia
14. **Adi-Con CW Plus**, slab construction, Oklahoma, USA
15. **Adi-Con CW Plus**, clarifier repairs, Botosani, Romania
16. **Adi-Con CW Plus**, clarifier repairs, Botosani, Romania

## GEMITE INNOVATIVE GLOBAL CENTRE

Gemite draws upon many decades of a practical experience to assist the Architect, Engineer and Contractor to find the most Efficient and Permanent Solution. From the Condition Analysis of existing structures, to continuous support during the Design and Specification process, we provide advice to assure that the best and cost efficient systems are selected.

### Worldwide Technology Leader

Our continuous Innovation, Superior Quality and Solid Reputation make Gemite the preferred industry choice for lasting and reliable solutions. The latest technology introduced by Gemite is a Nano group of products.



15



16



12



13



14

### Established and Field Proven Technology

Gemite material systems have been used in new construction and restoration projects ranging from small to huge. We have an international track record of successful installations for over 25 years around the globe, from the ravages of Sahara to the colds of Alaska.

### Global Availability and Support

Gemite materials are available internationally, ensuring consistent quality and service to customers everywhere. Gemite guarantees a Single Source of Environmentally Responsible Materials, applied by well-trained Professional Applicators, and supported by a Global Technical Network.

### LEED, Green and Safe

Gemite supports LEED Green concept and strives to maximize sustainability and environmental health by using materials with the lowest possible carbon footprint. Gemite's constant improvement of operating procedures and strict Quality Control according to its ISO 9001 Certification assures that we deliver materials with consistent quality and performance to our global Customers.



**Canada:** 1787 Drew Road  
Mississauga, Ontario  
L5S 1J5  
Phone: 905-672-2020  
Fax: 905-672-6780

**USA:** 160-3840 East Robinson  
Road Amherst, New  
York,  
14228  
Phone: 888-443-6483  
Fax: 888-443-6329

**Associated Companies World Wide**  
[www.gemite.com](http://www.gemite.com)



**Brochures for following markets are available on request:**

- Water treatment
- Wastewater treatment
- Crystalline waterproofing
- Bridges
- Parking garages
- Wall and roof coatings
- Industrial concrete
- Dams and locks
- Tunnels
- Marine structures
- Cooling towers
- Airports
- Chemical protection of concrete
- Carbon Fibre Reinforcement
- Sewers and manholes