



## General construction, Deck Overlays and Protection

Product	Description and Use
<b>Adi-Con CSF R</b>	Silica fume (microsilica) based admixture for concrete that provides low permeability, reduces chloride penetration & results in water-resistant concrete. The admixture does not affect slump of concrete, Added at the site to ready mix truck, or in concrete mixing plant.
<b>Adi-Con CW Plus</b>	Crystalline Waterproofing admixture for concrete. Used in construction of foundation walls and slabs.
<b>Gem-Crete HDO</b>	Waterproofing, high abrasion & impact resistant traffic deck overlay applied 12-50 mm (1/2"-2"). High-volume fibre reinforced mortar composition supplied as premix, or concentrate that is mixed on site with sand, cement and water using mortar mixer.
<b>Gem-Crete HF ST</b>	A very thin Traffic Waterproofing coating, applied at 6-10 mm (1/4"-3/8") thickness, exhibiting a high abrasion and impact resistance. It is a two-component system, consisting of dry powders and a liquid additive.
<b>Gem-Crete TWM Plus</b>	A flexible, polymer modified traffic membrane.
<b>Gem-Cote EP 100</b>	High performance epoxy coating; used on its own or in combination with vapor retarder, Cem-Kote Barrier Coat 100
<b>Cem-Kote Barrier Cote 100</b>	Non-flexible, high impact and abrasion resistant traffic membrane; also vapor retarder
<b>Gem-Gard SL 100</b>	A hydrophobic silane, 100% active solids, penetrating sealer used in protection of concrete decks against penetration of salt and water. It also increases a freeze /thaw resistance of concrete.
<b>Gem-Cote WA Plus</b>	A waterborne acrylic, color sealer for traffic surfaces
<b>Gem-Seal WA ST</b>	A waterborne acrylic sealer for traffic surfaces

## Structure Repair and Waterproofing

Product	Description and Use
<b>Fibre-Prime</b>	Brush applied, cement based, corrosion protective coating containing migrating corrosion inhibitor. It is used to protect exposed reinforcing steel.
<b>Fibre-Patch OV</b>	Hand applied, fast setting fibre reinforced, micro-silica enhanced structural waterproofing mortar for application on horizontal, vertical and overhead surfaces. Also used in grouting types of concrete repairs.
<b>Fibre-Patch ST &amp; ES ST</b>	Horizontal concrete repair mortars. The fast strength developing mortars, Fibre-Patch ES ST allows a fast application of polyurethane or epoxy coatings after repair, or very early opening to traffic
<b>Gem-Plast TC</b>	Repair mortar used in thin section, feather edge to 12 mm (up to 1/2 in) surface repair of reinforced concrete. Hand or machine applied.
<b>Spray-Con WS ST</b>	Spray-applied, fibre reinforced, micro-silica enhanced wet process shotcrete for large volume structural rehabilitation and reprofiling.
<b>Cem-Kote CW Plus</b>	Crystalline waterproofing; slurry applied waterproofing to provide negative side waterproofing
<b>Cem-Kote Flex ST</b>	A flexible, polymer modified cement membrane waterproofing to provide negative/positive side waterproofing
<b>Gem-Gard MCI</b>	Deep penetrating migrating corrosion inhibitor to provide corrosion protection of reinforcing steel.

All accessory products and manufactured and supplied by Gemite Products Inc.



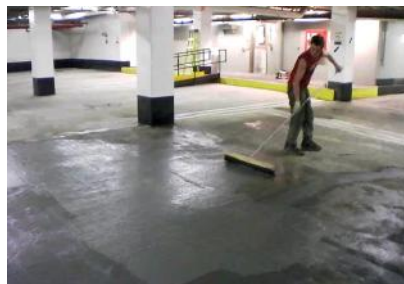
1



2



3



4



5



6



7



8



9



10



12

**Figures**

1. Gem-Cote WA Plus, Seoul, Republic of Korea
2. Gem-Crete HDO – Saskatoon, Saskatchewan, Canada
3. Gem-Crete HDO – Saint John, New Brunswick, Canada
4. Gem-Crete HF ST – Toronto, Ontario, Canada
5. Gem-Crete HDO – Saint John, New Brunswick, Canada
6. Adi-Con CSF R – Prague, The Czech Republic
7. Gem-Crete HDO – Corner Brook, Newfoundland, Canada
8. Adi-Con CW Plus – Bratislava, Slovakia
9. Adi-Con CSF R – Warsaw, Poland
10. Shotblasting, prior to Gem-Crete HDO – Syracuse, NY, USA
11. Adi-Con CW Plus – Bratislava, Slovakia
12. Gem-Crete TWM – negative side waterproofing of slab, Honolulu, Hawaii, USA
13. Fibre-Prime, Spray-Con WS ST and Cem-Kote ST – parking garage slab (overhead) repairs – Chicago, Michigan, USA
14. Gem-Crete HDO – Paterson, New Jersey, USA
15. Gem-Seal WA ST – Trnava, Slovakia
16. Gem-Crete HF ST – Lufkin, Texas, USA



13

## GEMITE INNOVATIVE GLOBAL CENTRE

Gemite draws upon many decades of a practical experience to assist the Architect, Engineer and Contractor to find the most Efficient and Permanent Solution. From the Condition Analysis of existing structures, to continuous support during the Design and Specification process, we provide advice to assure that the best and cost efficient systems are selected.

### Worldwide Technology Leader

Our continuous Innovation, Superior Quality and Solid Reputation make Gemite the preferred industry choice for lasting and reliable solutions. The latest technology introduced by Gemite is a Nano group of products.



14



15



16

### Established and Field Proven Technology

Gemite material systems have been used in new construction and restoration projects ranging from small to huge. We have an international track record of successful installations for over 25 years around the globe, from the ravages of Sahara to the colds of Alaska.

### Global Availability and Support

Gemite materials are available internationally, ensuring consistent quality and service to customers everywhere. Gemite guarantees a Single Source of Environmentally Responsible Materials, applied by well-trained Professional Applicators, and supported by a Global Technical Network.

### LEED, Green and Safe

Gemite supports LEED Green concept and strives to maximize sustainability and environmental health by using materials with the lowest possible carbon footprint. Gemite's constant improvement of operating procedures and strict Quality Control according to its ISO 9001 Certification assures that we deliver materials with consistent quality and performance to our global Customers.

### Brochures for following markets are available on request:

- Water treatment
- Wastewater treatment
- Crystalline waterproofing
- Bridges
- Parking garages
- Wall and roof coatings
- Industrial concrete
- Dams and locks
- Tunnels
- Marine structures
- Cooling towers
- Airports
- Chemical protection of concrete
- Carbon Fibre Reinforcement
- Sewers and manholes



Canada: 1787 Drew Road  
Mississauga, Ontario  
L5S 1J5  
Phone: 905-672-2020  
Fax: 905-672-6780

USA: 160-3840 East Robinson Road  
Amherst, New York,  
14228  
Phone: 888-443-6483  
Fax: 888-443-6329

### Associated Companies World Wide

[www.gemite.com](http://www.gemite.com)

