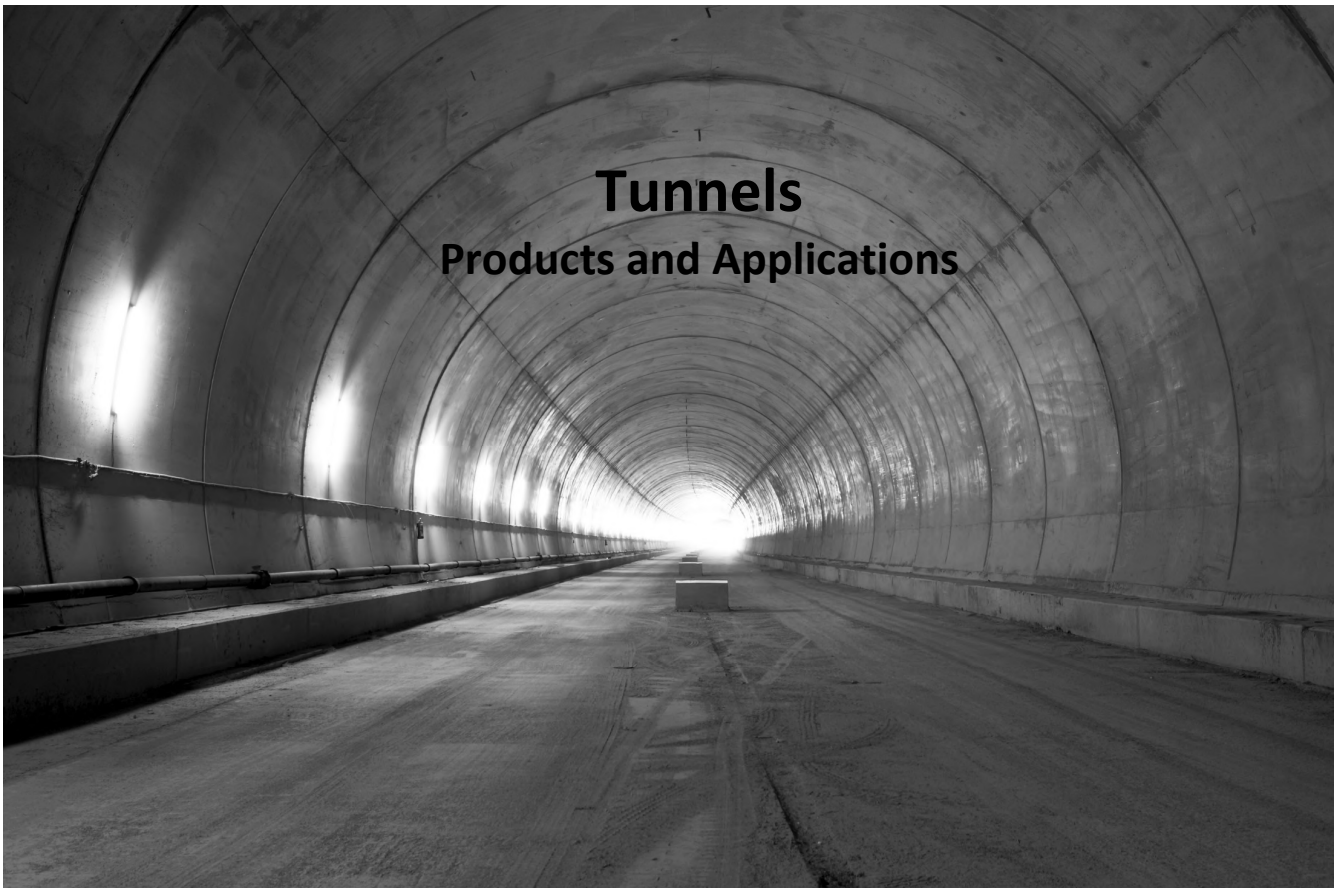


Tunnels

Products and Applications



General construction, repair and waterproofing

| Product | Description and Use |
|-----------------------------------|---|
| Adi-Con CSF R | Silica fume (microsilica) based admixture that provides low permeability, reduces chloride penetration and water-resistant concrete overlay. The admixture has no effect on slump of concrete. Added on site to ready mix truck, or in concrete mixing plant. |
| Adi-Con CSF | Microsilica used as mineral admixture in dry shotcrete (gunite), to increase strength, reduce permeability and increase chemical resistance. The main application is in mining. |
| Adi-Con VCA | Viscosity control admixture to allow formulation of self-compacting concrete. Used typically in conjunction with a poly-carboxylate superplasticizer, Adi-Con SP 500 |
| Adi-Con SP 500 | Polycarboxylate superplasticizer |
| Gem-Crete HDO | A high-volume fibre reinforced mortar composition, used as a thin, waterproofing, used in thin sections, varying from 12 to 50 mm (1/2 – 2 in). It is typically supplied as a concentrate and mixed on site with specified amount of sand, cement and water using mortar mixer. |
| Fibre-Prime | Brush applied, cement based, corrosion protective coating containing migrating corrosion inhibitor. It is used to protect exposed reinforcing steel. |
| Gem-Gard MCI | Deep penetrating migrating corrosion inhibitor to provide corrosion protection of reinforcing steel. |
| Spray-Con WS ST | Wets process shotcrete materials supplied as a premix and as a concentrate. |
| Spray-Con DS ST | Dry shotcrete (gunite), available as premix or as concentrate, for restoration of concrete structures |
| Fibre-Patch OV | Hand applied, fast setting fibre reinforced, micro-silica enhanced structural waterproofing mortar for application on horizontal, vertical and overhead surfaces. Also used in grouting types of concrete repairs. |
| Fibre-Patch ST & ES ST | Horizontal concrete repair mortar. Fast-strength developing mortar Fibre-Patch ES ST allows a quick application of polyurethane or epoxy coatings after repair, or very early opening to traffic |
| Cem-Kote Barrier Cote 100 | Negative/positive site waterproofing; often used prior to tunnel shotcreting |
| Cem-Kote Flex ST | Negative/Positive side, flexible waterproofing, often used prior to shotcreting |
| Cem-Kote CW Plus | Negative/positive side, crystalline waterproofing |
| Fibre-Patch WP | A hydraulic material (water plug) that stops active water leaks |
| Reinforcing Fabric HD | Reinforcing Fabric used with Cem-Kote Flex ST and Cem-Kote Barrier Coat 100, typically over cracks |

All accessory products are manufactured and supplied by Gemite Products Inc.



1



2



3



4



5



6



7



8



9



10



11



12

Figures

1. **Spray-Con DS ST** - Donbas tunnel, Ukraine
2. **Cem-Kote Flex ST** - Guangzhou dams, China
3. **Gem-Crete HDO** - storm/sewer tunnel, Thunder Bay, Ontario, Canada
4. **Cem-Kote Flex ST**, Xiaolangdi dam, China
5. **Fibre-Patch WP and Cem-Kote CW Plus** - subway system tunnel, Guadalajara, Mexico
6. **Cem-Kote Flex ST** - underground tunnels waterproofing, Mochovce, Slovakia
7. **Fibre-Patch WP** - flood control dikes, near Nanjing, China
8. **Cem-Kote Flex ST** - Xiaolangdi dam, China
9. **Cem-Kote Flex ST** - Xiaolangdi dam, China
10. **Spray-Con WS ST**, locks, Brandys nad Labem, the Czech Republic
11. **Spray-Con DS ST** - water tunnel, Detroit, Michigan, USA
12. **Adi-Con CSF R concrete** - lock tunnels, Gabčíkovo dam, Slovakia
13. **Spray-Con WS ST and Spray-Con DS ST** - Donbas water tunnel, Ukraine
14. **Spray-Con WS ST** - dam repairs, Mukachevo, Ukraine
15. **Spray-Con WS ST** - water tunnel, Donbas, Ukraine
16. **Spray-Con DS ST** - water tunnel, Detroit, Michigan, USA
17. **Spray-Con DS ST** - a mine near Donetsk, Ukraine
18. **Cem-Kote CW Plus** - subway, New York, NY, USA



13



15



14

GEMITE INNOVATIVE GLOBAL CENTRE

Gemite draws upon many decades of a practical experience to assist the Architect, Engineer and Contractor to find the most Efficient and Permanent Solution. From the Condition Analysis of existing structures, to continuous support during the Design and Specification process, we provide advice to assure that the best and cost efficient systems are selected.

Worldwide Technology Leader

Our continuous Innovation, Superior Quality and Solid Reputation make Gemite the preferred industry choice for lasting and reliable solutions. The latest technology introduced by Gemite is a Nano group of products.



Established and Field Proven Technology

Gemite material systems have been used in new construction and restoration projects ranging from small to huge. We have an international track record of successful installations for over 25 years around the globe, from the ravages of Sahara to the colds of Alaska.

Global Availability and Support

Gemite materials are available internationally, ensuring consistent quality and service to customers everywhere. Gemite guarantees a Single Source of Environmentally Responsible Materials, applied by well-trained Professional Applicators, and supported by a Global Technical Network.

LEED, Green and Safe

Gemite supports LEED Green concept and strives to maximize sustainability and environmental health by using materials with the lowest possible carbon footprint. Gemite's constant improvement of operating procedures and strict Quality Control according to its ISO 9001 Certification assures that we deliver materials with consistent quality and performance to our global Customers.

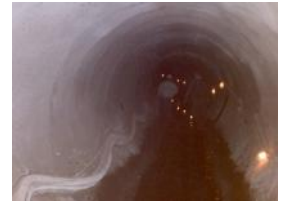


Canada: 1787 Drew Road
Mississauga, Ontario
L5S 1J5
Phone: 905-672-2020
Fax: 905-672-6780

USA: 160-3840 East Robinson Road
Amherst, New York,
14228
Phone: 888-443-6483
Fax: 888-443-6329

Associated Companies World Wide

www.gemite.com



16



17



18

Brochures for following markets are available on request:

- Water treatment
- Wastewater treatment
- Crystalline waterproofing
- Bridges
- Parking garages
- Wall and roof coatings
- Industrial concrete
- Dams and locks
- Tunnels
- Marine structures
- Cooling towers
- Airports
- Chemical protection of concrete
- Carbon Fibre Reinforcement
- Sewers and manholes