

Marine Structures

Products and Applications



Delivering tomorrow's technology today

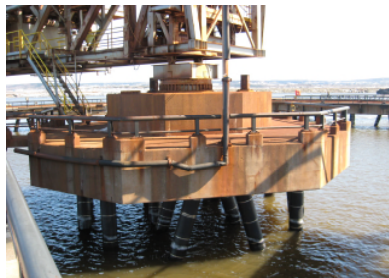
General construction, concrete repair and protection

Product	Description and Use
Adi-Con CSF R	Silica fume (micro-silica) based admixture for concrete; provides low permeability, chloride penetration and water resistant concrete overlay. It is typically used in thickness 5 cm (2 in). The admixture is formulated to provide no effect on slump of concrete and it is added either at the site to ready mix truck, or in concrete mixing plant.
Adi-Con CSF	This is a raw micro-silica, use typically for on site or factory formulated dry process shotcrete mixes as a mineral admixture to reduce permeability and rebound
Adi-Con VCA	Viscosity control admixture used in formulating self-compacting concrete. Used in new construction as well as repair
Gem-Crete HDO	A high volume fibre reinforced mortar composition, used as a thin, waterproofing, high abrasion and impact resistant deck overlay, in thickness varying from 12 to 50 mm (1/2 – 2 in). It is typically supplied as a concentrate and mixed on site with specified amount of sand, cement and water using mortar mixer.
Gem-Crete HF ST (Plus)	A very thin deck, waterproofing overlay, varying from a minimum thickness of 6 to 10 mm (1/4 to 3/8 in), exhibiting a high abrasion and impact resistance. It is a two component system, consisting of dry powders and a liquid additive. The "Plus" version is also fibre reinforced.
Fibre-Prime	Brush applied, cement based, corrosion protective coating containing migrating corrosion inhibitor. It is used to protect exposed reinforcing steel.
Gem-Gard MCI	Deep penetrating migrating corrosion inhibitor to provide corrosion protection of reinforcing steel.
Fibre-Patch OV	Hand applied, fast setting fibre reinforced, micro-silica enhanced structural waterproofing mortar for application on horizontal, vertical and overhead surfaces. Also used in grouting types of concrete repairs.
Fibre-Patch ST and ES ST (Plus)	Horizontal concrete repair mortars. The fast strength developing mortars, Fibre-Patch ES ST and Plus allow a fast application of polyurethane or epoxy coatings after repair, or very early opening to traffic
Gem-Plast TC	Repair mortar used in thin section, feather edge to 12 mm (up to ½ in) surface repair of reinforced concrete. Hand or machine applied.
Spray-Con WS ST (Plus)	Spray-applied, fibre reinforced, micro-silica enhanced wet process shotcrete for large volume structural rehabilitation and re-profiling. Available as premix or concentrate. The Plus version also contains dry polymer when required.
Spray-Con DS ST (Plus)	Spray- applied dry process shotcrete (gunite), available as premix or as concentrate. Typically used in restoration of concrete marine structures
Cem-Kote Barrier Coat 100	A cementitious waterproofing coating to provide protection against penetrating of salts
Cem-Kote Flex ST	A flexible, cementitious waterproofing coating to provide protection against penetrating salts
Gem-Cote CW Plus	Crystalline, cementitious waterproofing coating with fast setting and strength development, used in tide zones with limited curing time available.

All accessory products and manufactured and supplied by Gemite Products Inc.



1



2



3



4



5



6



7



8



9



10



11



12



13



14

Figures

1. **Gem-Crete HDO** –Port of Saint John, New Brunswick, Canada
2. **Cem-Kote Flex ST** – marine potash loader, Port of Saint John, New Brunswick, Canada
3. **Gem-Crete HDO** - Fortune Wharf, Newfoundland, Canada
4. **Gem-Crete HDO** – Port of Gdynia, Poland
5. **Gem-Crete HDO** – Canadian Navy base, Halifax, Nova Scotia, Canada
6. **Gem-Crete HDO V**, – Argentia, Newfoundland, Canada
7. **Spray-Con DS ST, Cem-Kote Flex ST** - Corner Brook, Newfoundland, Canada
8. **Spray-Con DS ST, Cem-Kote Flex ST** - Corner Brook, Newfoundland, Canada
9. **Spray-Con DS ST** - Stephenville, Newfoundland, Canada
10. **Spray-Con DS ST** - Stephenville., Newfoundland, Canada
11. **Fibre-Prime, Spray-Con DS ST** - west coast, Newfoundland, Canada
12. **Spray-Con DS ST** – the west coast Newfoundland, Canada
13. **Gem-Crete HDO** – Marystown, Newfoundland, Canada
14. **Gem-Crete HDO** – Port of Gdynia, Poland
15. **Gem-Crete HDO** – Port of Saint John, New Brunswick, Canada
16. **Gem-Crete HDO** – Port of Gdynia, Poland
17. **Cem-Kote Flex ST** – Port of Odessa, Ukraine
18. **Tuff-Flex CA** – Port of Tallinn, Estonia

GEMITE INNOVATIVE GLOBAL CENTRE

Gemite draws upon many decades of a practical experience to assist the Architect, Engineer and Contractor to find the most Efficient and Permanent Solution. From the Condition Analysis of existing structures, to continuous support during the Design and Specification process, we provide advice to assure that the best and cost efficient systems are selected.

Worldwide Technology Leader

Our continuous Innovation, Superior Quality and Solid Reputation make Gemite the preferred industry choice for lasting and reliable solutions. The latest technology introduced by Gemite is a Nano group of products.



15



16



17

Established and Field Proven Technology

Gemite material systems have been used in new construction and restoration projects ranging from small to huge. We have an international track record of successful installations for over 25 years around the globe, from the ravages of Sahara to the colds of Alaska.



18

Global Availability and Support

Gemite materials are available internationally, ensuring consistent quality and service to customers everywhere. Gemite guarantees a Single Source of Environmentally Responsible Materials, applied by well-trained Professional Applicators, and supported by a Global Technical Network.

LEED, Green and Safe

Gemite supports LEED Green concept and strives to maximize sustainability and environmental health by using materials with the lowest possible carbon footprint. Gemite's constant improvement of operating procedures and strict Quality Control according to its ISO 9001 Certification assures that we deliver materials with consistent quality and performance to our global Customers.

Brochures for following markets are available on request:

- Water treatment
- Wastewater treatment
- Crystalline waterproofing
- Bridges
- Parking garages
- Wall and roof coatings
- Industrial concrete
- Dams and locks
- Tunnels
- Marine structures
- Cooling towers
- Airports
- Chemical protection of concrete
- Carbon Fibre Reinforcement
- Sewers and manholes



Canada: 1787 Drew Road
Mississauga, Ontario
L5S 1J5
Phone: 905-672-2020
Fax: 905-672-6780

USA: 160-3840 East Robinson Road
Amherst, New York,
14228
Phone: 888-443-6483
Fax: 888-443-6329

Associated Companies World Wide

www.gemite.com

