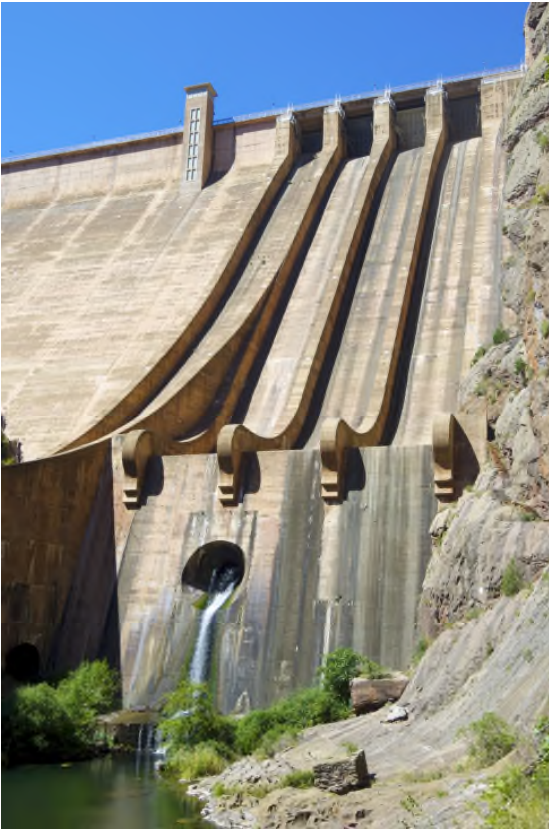
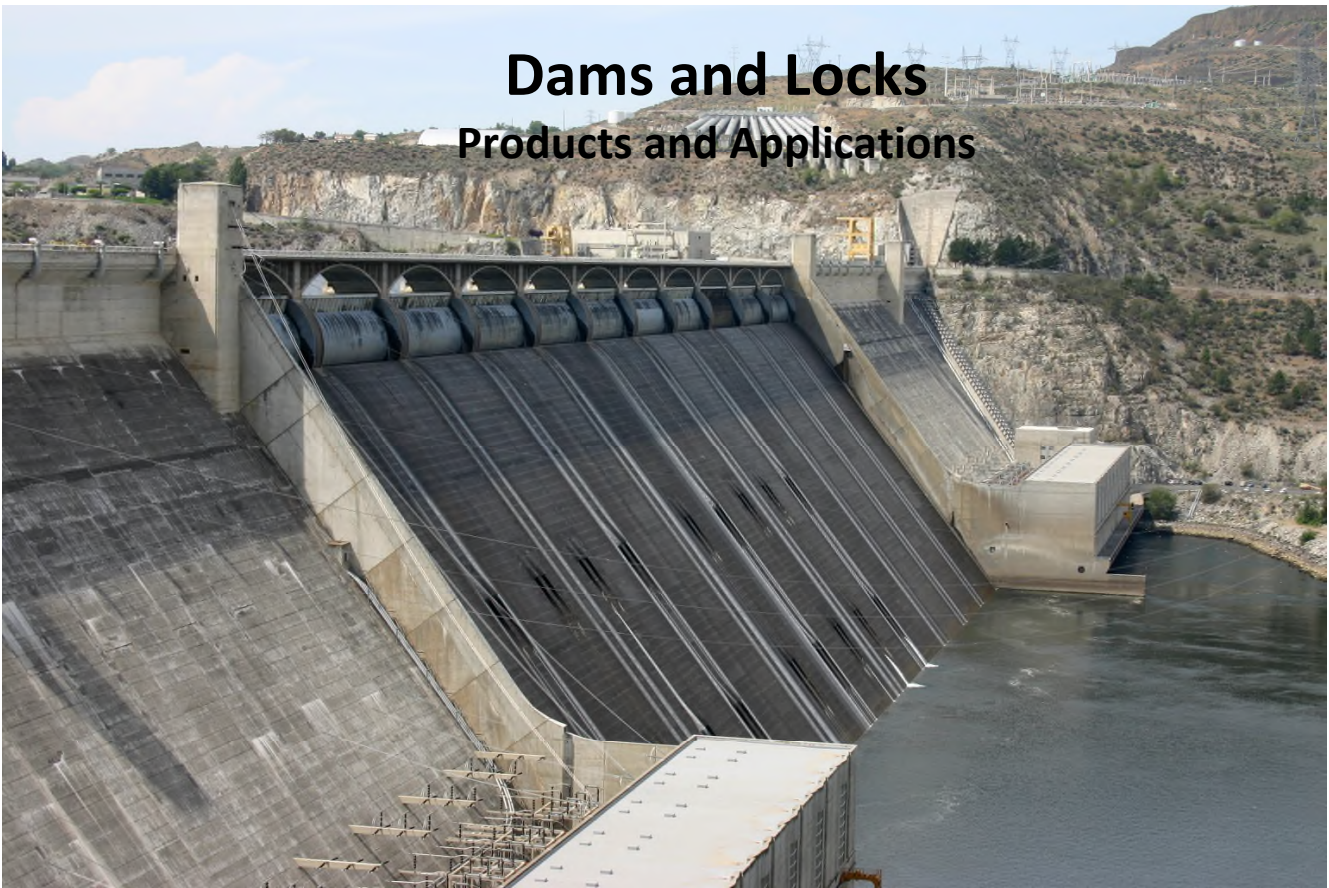


Dams and Locks

Products and Applications

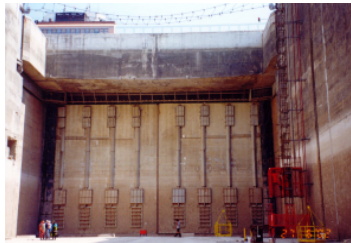


Delivering tomorrow's technology today

General construction, concrete repair and protection

Product	Description and Use
Adi-Con CSF R	Silica fume (micro-silica) based admixture for concrete; provides low permeability, chloride penetration and water resistant concrete overlay. It is typically used in thickness 5 cm (2 in). The admixture is formulated to provide no effect on slump of concrete and it is added either at the site to ready mix truck, or in concrete mixing plant.
Adi-Con CSF	This is a raw micro-silica, use typically for on site or factory formulated dry process shotcrete mixes, or concrete as a mineral admixture to reduce permeability and rebound
Adi-Con VCA	Viscosity control admixture used in formulating self-compacting concrete. Used in new construction as well as repair
Gem-Crete HDO	A high volume fibre reinforced mortar composition, used as a thin, waterproofing, high abrasion and impact resistant deck overlay, in thickness varying from 12 to 50 mm (1/2 – 2 in). It is typically supplied as a concentrate and mixed on site with specified amount of sand, cement and water using mortar mixer.
Gem-Crete HF ST (Plus)	A very thin deck, waterproofing overlay, varying from a minimum thickness of 6 to 10 mm (1/4 to 3/8 in), exhibiting a high abrasion and impact resistance. It is a two component system, consisting of dry powders and a liquid additive. The "Plus" version is also fibre reinforced.
Fibre-Prime	Brush applied, cement based, corrosion protective coating containing migrating corrosion inhibitor. It is used to protect exposed reinforcing steel.
Gem-Gard MCI	Deep penetrating migrating corrosion inhibitor to provide corrosion protection of reinforcing steel.
Fibre-Patch OV	Hand applied, fast setting fibre reinforced, micro-silica enhanced structural waterproofing mortar for application on horizontal, vertical and overhead surfaces. Also used in grouting types of concrete repairs.
Fibre-Patch ST and ES ST (Plus)	Horizontal concrete repair mortars. The fast strength developing mortars, Fibre-Patch ES ST and Plus allow a fast application of polyurethane or epoxy coatings after repair, or very early opening to traffic
Gem-Plast TC	Repair mortar used in thin section, feather edge to 12 mm (up to ½ in) surface repair of reinforced concrete. Hand or machine applied.
Spray-Con WS ST (Plus)	Spray-applied, fibre reinforced, micro-silica enhanced wet process shotcrete for large volume structural rehabilitation and re-profiling. Available as premix or concentrate. The Plus version also contains dry polymer when required.
Spray-Con DS ST (Plus)	Spray- applied dry process shotcrete (gunite), available as premix or as concentrate. Typically used in restoration of dam structures
Cem-Kote Barrier Coat 100	A cementitious waterproofing coating
Cem-Kote Flex ST	A flexible, cementitious waterproofing coating
Cem-Cote CW Plus	Crystalline, cementitious waterproofing coating with fast setting and strength development in applications with limited curing time available before exposure to water.

All accessory products and manufactured and supplied by Gemite Products Inc.



1



2



3



4



5



6



7



11



12



8



13



9



10

Figures

1. **Adi-Con CSF R concrete** – repair of locks at Gabcikovo Dam, Slovakia
2. **Gem-Plast TC and Cem-Kote Flex ST** – concrete structure repair, Debe Dam, Poland
3. **Adi-Con CSF R concrete and Cem-Kote Barrier Coat 100** as bonding agent – repairs of spillways at Lijixia Dam, China
4. **Gem-Crete HDO** – deck overlay, Gabcikovo Dam, Slovakia
5. **Gem-Crete TWM Plus** – deck waterproofing, Jordan Dam, Alabama, USA
6. **Fibre-Patch OV, Gem-Crete HDO** – concrete structure repairs, Chuongyu Dam, South Korea
7. **Cem-Kote Flex ST** – negative side waterproofing of cracks and joints, Xiaolangdi Dam, China
8. **Cem-Kote Flex ST** – intake repair and waterproofing, Norway Dam, Michigan, USA
9. **Spray-Con WS ST** – wet process shotcrete repair of Dneprogress Dam, Zaporozhie, Ukraine
10. **Gem-Crete HDO** – dam repairs, Geosan Dam, South Korea
11. **Fibre-Patch OV** – aquaduct repairs, near Phoenix, Arizona, USA
12. **Adi-Con CSF R concrete and Cem-Kote Barrier Coat 100** as bonding agent – repairs of spillways at Lijixia Dam, China
13. **Adi-Con CSF R concrete and Cem-Kote Barrier Coat 100** as bonding agent – repairs of spillways at Lijixia Dam, China
14. **Spray-Con WS ST and Spray-Con DS ST** - Dnepr-Donbas water tunnel, before repairs, Ukraine
15. **Spray-Con WS ST and Spray-Con DS ST** - Dnepr-Donbas water tunnel, after repairs, Ukraine
16. **Cem-Kote Flex ST** – deck waterproofing, Creek Rapid Dam, Manitoba, Canada
17. **Spray-Con DS ST** – water intake tunnel, Detroit, Michigan, USA
18. **Gem-Crete HF ST** – deck waterproofing, snow plough traffic, Seven Sisters Dam, Manitoba, Canada

GEMITE INNOVATIVE GLOBAL CENTRE

Gemite draws upon many decades of a practical experience to assist the Architect, Engineer and Contractor to find the most Efficient and Permanent Solution. From the Condition Analysis of existing structures, to continuous support during the Design and Specification process, we provide advice to assure that the best and cost efficient systems are selected.

Worldwide Technology Leader

Our continuous Innovation, Superior Quality and Solid Reputation make Gemite the preferred industry choice for lasting and reliable solutions. The latest technology introduced by Gemite is a Nano group of products.



14



15



16



17



18

Established and Field Proven Technology

Gemite material systems have been used in new construction and restoration projects ranging from small to huge. We have an international track record of successful installations for over 25 years around the globe, from the ravages of Sahara to the colds of Alaska.

Global Availability and Support

Gemite materials are available internationally, ensuring consistent quality and service to customers everywhere. Gemite guarantees a Single Source of Environmentally Responsible Materials, applied by well-trained Professional Applicators, and supported by a Global Technical Network.

LEED, Green and Safe

Gemite supports LEED Green concept and strives to maximize sustainability and environmental health by using materials with the lowest possible carbon footprint. Gemite's constant improvement of operating procedures and strict Quality Control according to its ISO 9001 Certification assures that we deliver materials with consistent quality and performance to our global Customers.

Brochures for following markets are available on request:

- Water treatment
- Wastewater treatment
- Crystalline waterproofing
- Bridges
- Parking garages
- Wall and roof coatings
- Industrial concrete
- Dams and locks
- Tunnels
- Marine structures
- Cooling towers
- Airports
- Chemical protection of concrete
- Carbon Fibre Reinforcement
- Sewers and manholes



Canada: 1787 Drew Road
Mississauga, Ontario
L5S 1J5
Phone: 905-672-2020
Fax: 905-672-6780

USA: 160-3840 East Robinson Road
Amherst, New York,
14228
Phone: 888-443-6483
Fax: 888-443-6329

Associated Companies World Wide

www.gemite.com

