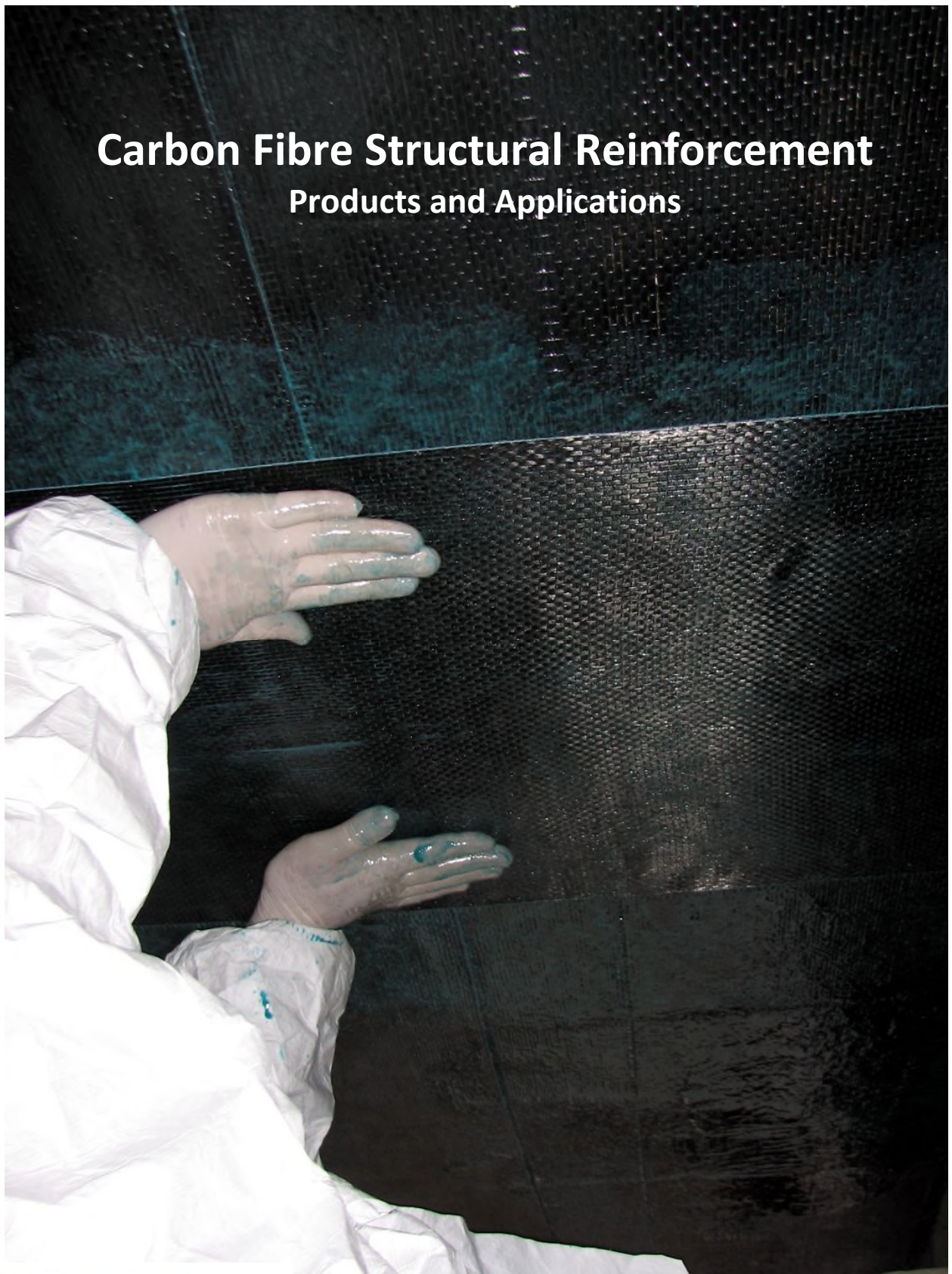


# Carbon Fibre Structural Reinforcement Products and Applications



## Concrete repair and structural reinforcement

Product	Description and Use
<b>Fibre-Prime</b>	Brush applied, cement based, corrosion protective coating containing migrating corrosion inhibitor. It is used to protect exposed reinforcing steel.
<b>Fibre-Patch OV</b>	Hand applied, fast setting fibre reinforced, micro-silica enhanced structural waterproofing mortar for application on horizontal, vertical and overhead surfaces. Also used in grouting types of concrete repairs.
<b>Gem-Plast TC</b>	Repair mortar used in thin section, feather edge to 12 mm (up to ½ in) surface repair of reinforced concrete. Hand or machine applied.
<b>Spray-Con WS ST</b>	Spray-applied, fibre reinforced, micro-silica enhanced wet process shotcrete for large volume structural rehabilitation and re-profiling.
<b>Gem-Gard MCI</b>	Deep penetrating migrating corrosion inhibitor, provides corrosion protection of reinforcing steel
<b>Gem-Cote W ST Primer</b>	An epoxy primer for use Gem-Cote W ST Resin in application of Gem-Wrap CF – carbon fibre fabric (wrap)
<b>Gem-Cote W ST Resin</b>	An epoxy resin used as adhesive with Gem-Wrap CF
<b>Gem-Cote S ST Adhesive</b>	An epoxy resin adhesive, used with Gem-Strip, the pre-formed, reinforcing carbon fibre strip
<b>Gem-Strip CF</b>	Prefabricated carbon fibre strip used in structural reinforcement
<b>Gem- Wrap CF</b>	Carbon fabrics of different weights, used in structural reinforcement
<b>Cem-Kote Barrier Coat 100</b>	This is waterproofing and a vapour retarder used over concrete prior to application of epoxy adhesives, to eliminate de-bonding in case there is water of water vapour coming from behind the concrete layer. E.g. in reinforcement of underground concrete tunnels.

## Structure protection/waterproofing

Product	Description and Use
<b>Tuff-Flex CA</b>	A highly flexible, crack bridging, colored coating. Used mainly in restoration projects but also in new construction to provide low temperature crack bridging protection against water, chloride, carbon dioxide and oxygen intrusion.
<b>Primer #300</b>	Primer # 300 is used as a primer for Tuff-Flex CA, but can also be used as a protective, color finish
<b>Rain-Shield Stain OP WB</b>	Water borne, acrylic color coating/sealer is used to provide a long term protection of concrete against penetration of water and chlorides.
<b>Gem-Gard SL ST</b>	A hydrophobic silane, 100% active solids, penetrating sealer used in protection of concrete decks against penetration of salt and water. It also increases a freeze /thaw resistance of concrete.
<b>Cem-Kote ST</b>	Polymer modified cement damp-proofing coating, with superior durability and longevity
<b>Cem-Kote Flex ST (Plus)</b>	Highly flexible polymer modified cement coating, provides crack bridging and superior long term water proofing and protection of concrete bridge structures. Typically sprayed applied.
<b>Rain-Shield MC 100</b>	Penetrating, acrylic, water borne, clear coating, based on novel nano-technology.
<b>Gem-Gard MCI</b>	Deep penetrating migrating corrosion inhibitor, provides corrosion protection of reinforcing steel.

All accessory products and manufactured and supplied by Gemite Products Inc.



1



3



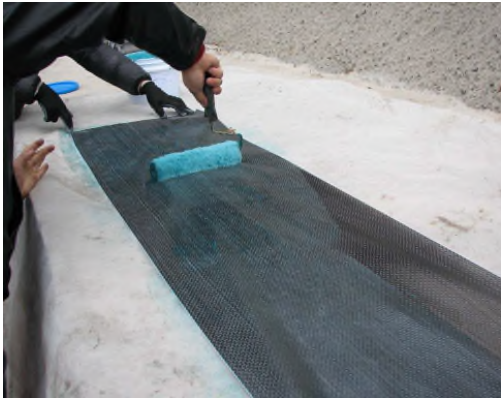
4



2



5



7



8



9



10



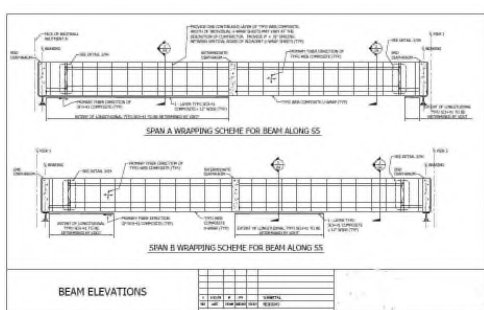
11



12

**Figures**

1. Gem-Cote W ST Primer, Resins and Gem-Wrap CF – Labalon viaduct across Danube, Romania
2. Gem-Cote W ST Primer, Resins and Gem-Wrap CF – Hwy #6, near Orsova, Romania
3. Gem-Cote S ST Adhesive, Gem-Strip CF – Hwy #6, Romania
4. Gem-Cote W ST Primer, Resins and Gem-Wrap CF – Hwy #6, near Orsova, Romania
5. Gem-Cote W ST Primer, Resins and Gem-Wrap CF – tunnel reinforcement, near Ias, Romania
6. Gemm-Cote W ST Primer, Resins and Gem-Wrap CF – Labalon viaduct across Danube, Romania
7. Gem-Cote ST Resin, Gem-Wrap CF – carbon fabric resin impregnation, Hwy #6, Romania
8. Gem-Cote W ST Primer, Resins and Gem-Wrap CF – Labalon viaduct across Danube, Romania
9. Gem-Cote W ST Primer, Resins and Gem-Wrap CF – Labalon viaduct across Danube, Romania
- 10 Gem-Strip CF – Hwy #6, Romania
- 11 Gem-Cote W ST Primer, Resins and Gem-Wrap CF – Hwy #6, near Orsova, Romania
- 12 Gem-Cote W ST Primer, Resins and Gem-Wrap CF – tunnel reinforcement, near Ias, Romania
- 13 Typical shop drawings issued in structural reinforcement of a bridge
- 14 Gem-Wrap CF and Cem-Kote Flex ST – structural reinforcing of roof slab, water tank, Romania
- 15 Cem-Kote Barrier Coat 100 – application over concrete as waterproofing and water vapor retardation, prior to application of Gem-Wrap CF – tunnel near Ias, Romania
- 16 Gem-Cote W ST Primer, Gem-Wrap CF application – tunnel near Ias Romania
- 17 Gem-Cote S ST Adhesive, Gem-Strip CF, Primer #300 and Tuff-Flex CA – Daejeon, South Korea



13

## GEMITE INNOVATIVE GLOBAL CENTRE

Gemite draws upon many decades of a practical experience to assist the Architect, Engineer and Contractor to find the most Efficient and Permanent Solution. From the Condition Analysis of existing structures, to continuous support during the Design and Specification process, we provide advice to assure that the best and cost efficient systems are selected.

### Worldwide Technology Leader

Our continuous Innovation, Superior Quality and Solid Reputation make Gemite the preferred industry choice for lasting and reliable solutions. The latest technology introduced by Gemite is a Nano group of products.



14



15



16

### Established and Field Proven Technology

Gemite material systems have been used in new construction and restoration projects ranging from small to huge. We have an international track record of successful installations for over 25 years around the globe, from the ravages of Sahara to the colds of Alaska.

### Global Availability and Support

Gemite materials are available internationally, ensuring consistent quality and service to customers everywhere. Gemite guarantees a Single Source of Environmentally Responsible Materials, applied by well-trained Professional Applicators, and supported by a Global Technical Network.



17

### LEED, Green and Safe

Gemite supports LEED Green concept and strives to maximize sustainability and environmental health by using materials with the lowest possible carbon footprint. Gemite's constant improvement of operating procedures and strict Quality Control according to its ISO 9001 Certification assures that we deliver materials with consistent quality and performance to our global Customers.

**Brochures for following markets are available on request:**

- Water treatment
- Wastewater treatment
- Crystalline waterproofing
- Bridges
- Parking garages
- Wall and roof coatings
- Industrial concrete
- Dams and locks
- Tunnels
- Marine structures
- Cooling towers
- Airports
- Chemical protection of concrete
- Carbon Fibre Reinforcement
- Sewers and manholes

Canada: 1787 Drew Road  
Mississauga, Ontario  
L5S 1J5  
Phone: 905-672-2020  
Fax: 905-672-6780

USA: 160-3840 East Robinson Road  
Amherst, New York,  
14228  
Phone: 888-443-6483  
Fax: 888-443-6329



**Associated Companies World Wide**  
[www.gemite.com](http://www.gemite.com)

