

# PROJECT PROFILE



**Project:** Chemical storage tank of Blue Ridge Fibreboard Inc. company, Danville, Virginia

**Total area:** approximately 6,000 ft<sup>2</sup>

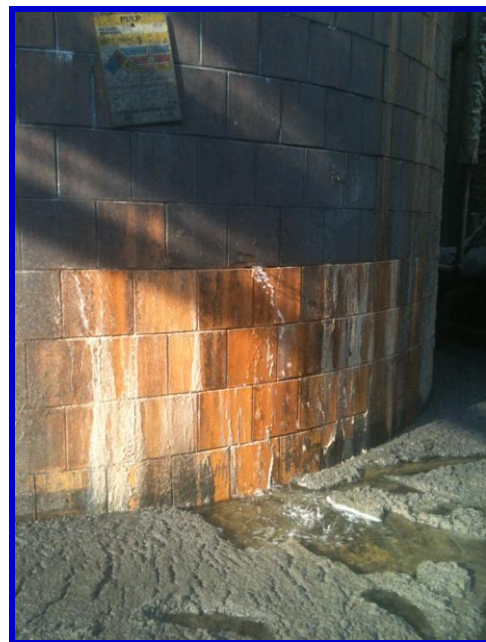
**Designer:** Gemite Products Inc.

**Contractor:** Tidewater Caulking & Waterproofing, Portsmouth, Virginia

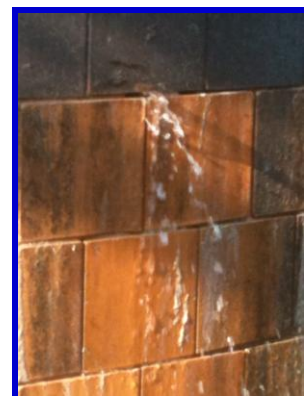
**Gemite products:** **Cem-Kote Barrier Coat 100, Cem-Kote Flex CR, Reinforcing Fabric HD**

**Objective:** Waterproofing and protection of an existing chemical storage tank.

The tank, made of reinforced concrete and lined with ceramic tiles has developed serious leaks. The liquid content was leaking through the tile joints and cracks concrete to the exterior. The chemistry of the liquid content was not difficult to handle by **Cem-Kote Flex CR**, (pH 3.5-4), but the main problem was to develop bond to very smooth and dense ceramic tile surface. In addition it was necessary to span and seal the movement in the failing tile joints. The surface was washed with 5,000 psi water and **Cem-Kote Barrier Coat 100** was used as the primary bonding layer. The bond of **Cem-Kote Barrier Coat 100** to the tile surface was checked prior to application of **Cem-Kote Flex CR**, reinforced with the **Reinforcing Fabric HD**. Approximately after one year of service, the tank was emptied and the application checked. There was no sign of any deterioration, de-bonding or crack penetration. In the words of the plant manager: **Cem-Kote Flex CR** “It looks like the day it was installed”.



Leaking tank



**Interior of the tank during inspection – Cem-Kote Flex CR and the Reinforcing Fabric HD are visible – no deterioration or de-bonding.**



For further information, please contact Gemite Products Inc.  
1787 Drew Road, Mississauga, Ontario, Canada, L5S 1J5,  
Phone (905) 672-2020, Fax (905) 672-6780 or  
160-3840 East Robinson Road,  
Amherst, New York, 14228, USA,  
Toll Free (888) 443-6483, Fax (888) 443 6329  
[www.gemite.com](http://www.gemite.com)  
[techinfo@gemite.com](mailto:techinfo@gemite.com)