

# PROJECT PROFILE

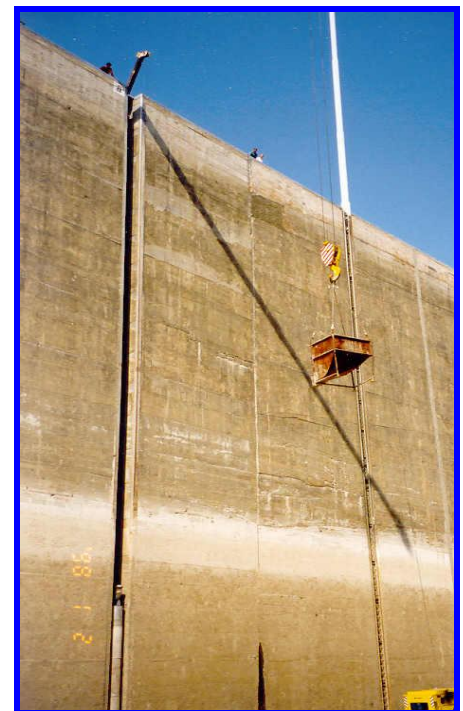


**Project:** Dam repairs, Slovakia

**Designer:** Ministry of Energy, Government of Slovakia.

**Gemite product:** **Adi-Con CSF (R)**

**Objective:** repair deteriorated concrete in channels connecting lock chambers of the largest dam on Danube River – Gabčíkovo. The losses of concrete sections, up to 50 cm deep, were caused by cavitation, due to high speed and large volumes of water flow. **Adi-Con CSF(R)** concrete was used in the repair in 1998. The inspections show a considerably better resistance of **Adi-Con CSF(R)** concrete to cavitation, when compared with original concrete.



For further information, please contact Gemite Products Inc.  
1787 Drew Road, Mississauga, Ontario, Canada, L5S 1J5,  
Phone (905) 672-2020, Fax (905) 672-6780 or  
160-3840 East Robinson Road,  
Amherst, New York, 14228, USA,  
Toll Free (888) 443-6483, Fax (888) 443 6329  
[www.gemite.com](http://www.gemite.com)  
techinfo@gemite.com